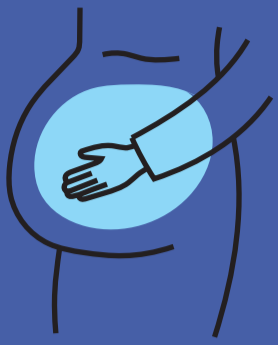


16 Facts for 16 Days

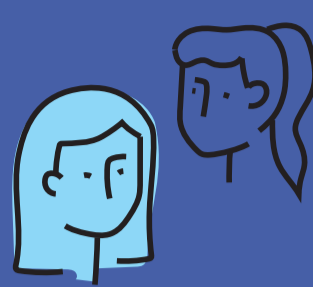
25 November—10 December



Domestic abuse does not stop in pregnancy



Domestic abuse during pregnancy has similar rates to gestational diabetes.



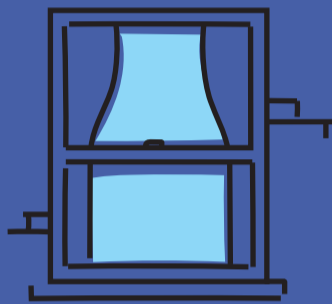
Pregnancy and post-partum are periods of heightened risk for women experiencing domestic abuse



Women subjected to domestic abuse are more likely to report an unplanned pregnancy



Both mother and baby are victims of domestic abuse during pregnancy



Abusers target assaults aimed at the abdomen during a woman's pregnancy



Women who experience domestic abuse during pregnancy are less likely to breastfeed

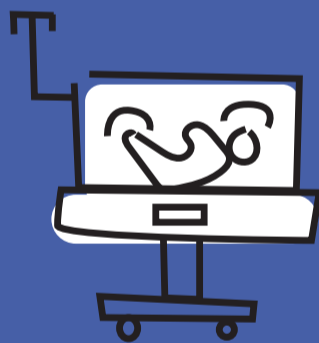


In 2022, the Women's Maternity Outreach worker supported 53 women during 356 one-to-one meetings

Impacts:



Miscarriage



Premature labour and birth



Delivering a baby with a low birth weight



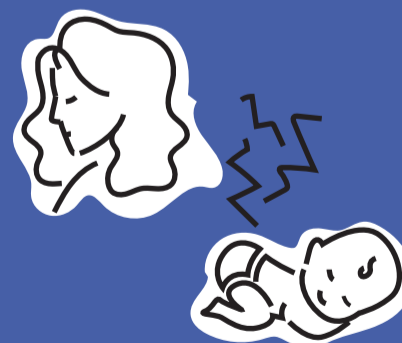
Self-medication or use of alcohol and drugs to cope



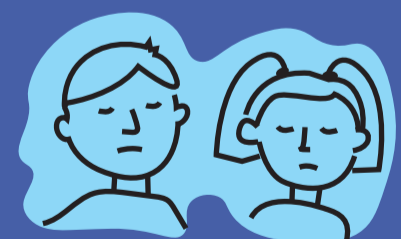
Delays in accessing maternity care



Postpartum depression, stress and anxiety



Negative impact on parental bonding



Behavioural and emotional problems in children up to four years later

Working in partnership with maternity hospitals to listen, believe, support and empower women experiencing domestic abuse.